



KRAEMER

Spun in  
Nazareth,  
Pennsylvania

EXPERIENCE



Intermediate

YARN

Kraemer Yarns  
Perfection Worsted  
(30% Merino Wool /  
70% Acrylic)



2 skeins  
(Shown in color  
Cinnamon)

Finished Measurements:  
67 1/2" x 5"

GAUGE

27 sts &  
26 rows = 4"

Knitting Needles:  
Size U.S. 8 / 5 mm

# Riverpath Scarf

By Eleanor Swogger



This scarf features a textured stitch pattern that meanders like a lazy river. The stitch pattern is created with only knits and purls. Get lost in the joy of knitting this easy pattern.



**Note:** The stitch pattern is a 16 stitch repeat. If you wish to make a wider scarf add an addition 16 stitches (additional yarn will be required).

**Begin Scarf:** Cast on 34 st(s).

**Row 1:** \* K10, p2, k2, p2, repeat from \* once, k2.

**Row 2:** P2, \*, K2, P2, K2, P2, K6, P2, repeat from \* once.

**Rows 3, 5, and 7:** Repeat row 1.

**Rows 4, 6, and 8:** Repeat row 2.

**Row 9:** \* K2, P2, K2, P2, K8, repeat from \* once, K2.

**Row 10:** P2, \*K6, P2, K2, P2, K2, P2, repeat from \* once.

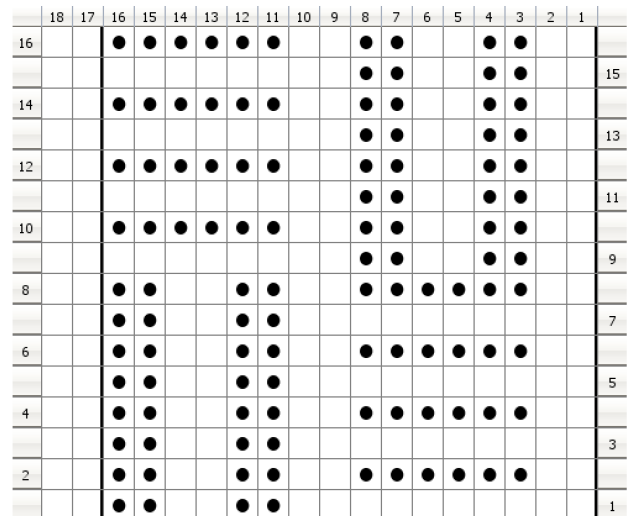
**Rows 11, 13, and 15:** Repeat row 9.

**Rows 12, 14, and 16:** Repeat row 10.

Repeat pattern rows 1 - 16 until almost out of yarn, ending with row 8 or 16. Or until desired length (*additional yarn will be required to make a longer scarf*).

Bind off all stitches in pattern.

**Note:** The scarf is not blocked. Blocking will result in a wider scarf.



**Legend:**

☐ **knit**  
RS: knit stitch  
WS: purl stitch

☒ **purl**  
RS: purl stitch  
WS: knit stitch

Repeat chart pattern between bold lines twice

Created in KnitVisualizer ([www.knitfoundry.com](http://www.knitfoundry.com))

**Notes:**

**Pattern:**

R1 (RS): k10, p2, k2, p2, k2  
R2 (WS): p2, k2, p2, k2, p2, k6, p2  
R3: k10, p2, k2, p2, k2  
R4: p2, k2, p2, k2, p2, k6, p2  
R5: k10, p2, k2, p2, k2  
R6: p2, k2, p2, k2, p2, k6, p2  
R7: k10, p2, k2, p2, k2  
R8: p2, k2, p2, k2, p2, k6, p2  
R9: k2, p2, k2, p2, k10  
R10: p2, k6, p2, k2, p2, k2, p2  
R11: k2, p2, k2, p2, k10  
R12: p2, k6, p2, k2, p2, k2, p2  
R13: k2, p2, k2, p2, k10  
R14: p2, k6, p2, k2, p2, k2, p2  
R15: k2, p2, k2, p2, k10  
R16: p2, k6, p2, k2, p2, k2, p2

We are committed to excellence in our products and strive to make these instructions as accurate and complete as possible. However, we cannot be responsible for the variance of individual knitters and crocheters, human error, or typographical mistakes. If you have any questions, please e-mail us at [info@kraemeryarns.com](mailto:info@kraemeryarns.com)

## COMMONLY USED KNITTING ABBREVIATIONS

**beg** begin  
**BO** bind off  
**CC** contrasting color  
**CN** cable needle  
**CO** cast on, cast off  
**cont** continue  
**dec(s)** decrease(s)/decreasing  
**dpn** double-pointed needles  
**eor** every other row  
**g st** garter stitch (K every row)  
**inc(s)** increase(s)/increasing  
**K** knit  
**K1, s1, pss0** knit one, slip one, pass slipped stitch over  
**K2tog** knit 2 together  
**K2tog tbl** knit 2 together through back loop  
**knwise** knitwise

**LH** left hand  
**M1** make one (increase 1 stitch)  
**MC** main color  
**P** purl  
**p2sso** pass 2 slipped stitches over  
**P2tog** purl 2 stitches together (1 stitch decreased)  
**patt rep(s)** pattern repeat(s)  
**patt(s)** pattern(s)  
**PM** place marker  
**psso** pass slipped stitch over  
**pwise** purlwise  
**rem** remain(ing)  
**rep** repeat  
**RH** right hand  
**rnd(s)** round(s)  
**RS** right side

**sl** slip  
**ssk** slip 1, slip1, knit 2 slipped stitches together  
**st st** stockinette (stocking) stitch (1 row K, 1 row P)  
**st(s)** stitch(es)  
**tbl** through back of loop  
**tog** together  
**WS** wrong side  
**wyib** with yarn in back  
**wyif** with yarn in front  
**yo** yarn over  
**yon** yarn over needle  
**()** repeat instructions in parantheses number of times indicated  
**\*** repeat instructions following asterisk as indicated or until end of row  
**[]** instructions in square brackets refer to larger sizes