



**KRAEMER**

Spun in  
Nazareth,  
Pennsylvania

**EXPERIENCE**



Intermediate

**YARN**

Perfection  
Chunky  
30% merino  
70% acrylic  
100 gr 120 yds



1 skein Fluff  
or color of your  
choice

**GAUGE**

11 sts x 16 rows =  
4" (10 cm)  
in rib patt with  
US # 11 needles

US #11 (8 mm) 16"  
circular & double  
point needles

or 32" circular for  
Magic Loop  
method

Stitch Marker  
Cable Needle  
Darning Needle

Finished  
Measurement

Adult size 19"-23"

# Chunky Cable Hat

by Kat Koeller

[www.paperyarnwire.com](http://www.paperyarnwire.com)



This classic design is a good choice for adventurous beginning knitters. The simple cables add interest without much difficulty, and the stitch definition of Perfection Chunky produces great results.

# Chunky Cable Hat

## Special Abbreviations:

**C5B:** With cable needle hold 2 sts to back of work, K next 3 sts, and K 2 sts from cable needle.

**C5F:** With cable needle hold 3 sts to front of work, K next 2 sts, and K 3 sts from cable needle.

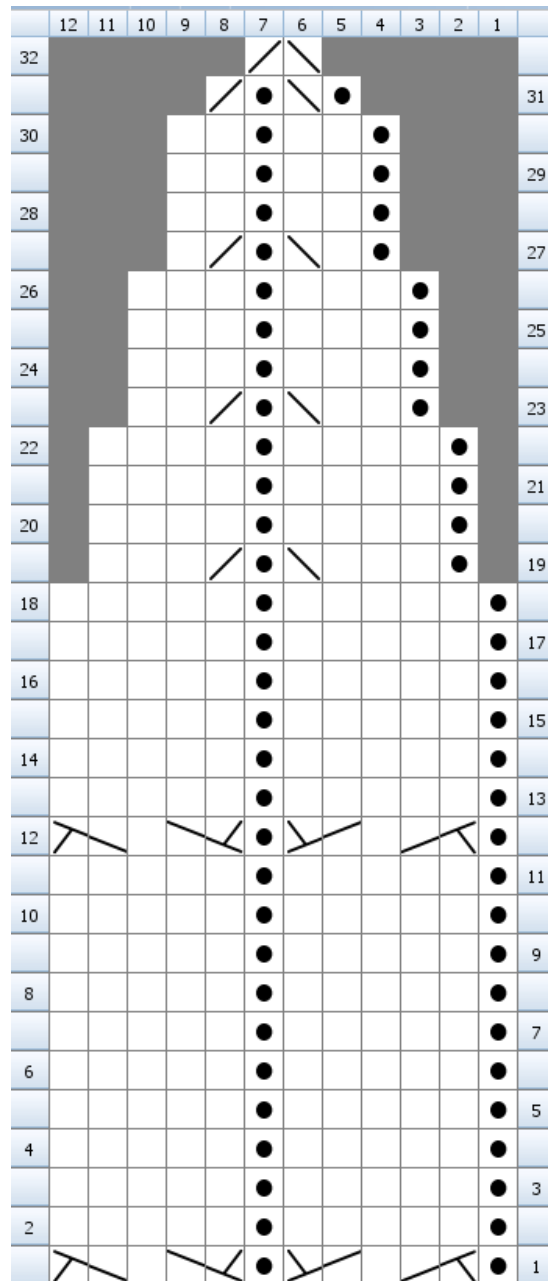
**Hat:** With circular needles CO 60 sts, PM and join into rnd being careful not to twist sts.

Rnd 1: \* P 1, K 3; rep from \* for rnd.  
Rep Rnd 1 for 5" - 6".

**Beg following cable patt (see chart):** Switch to dpn when necessary.

Rnd 1: \* P 1, C5B, P 1, C5F; rep from \* for rnd.  
 Rnd 2-11: \* P 1, K 5; rep from \* for rnd.  
 Rnd 12: \* P 1, C5B, P 1, C5F; rep from \* for rnd.  
 Rnd 13-18: \* P 1, K 5; rep from \* for rnd.  
 Rnd 19: \* P 1, K 3, SSK, P 1, K2tog, K 3; rep from \* for rnd.  
 Rnd 20-22: \* P 1, K 4; rep from \* for rnd.  
 Rnd 23: \* P 1, K 2, SSK, P 1, K2tog, K 2; rep from \* for rnd.  
 Rnd 24-26: \* P 1, K 3; rep from \* for rnd.  
 Rnd 27: \* P 1, K 1, SSK, P 1, K2tog, K 1; rep from \* for rnd.  
 Rnd 28-30: \* P 1, K 2; rep from \* for rnd.  
 Rnd 31: \* P 1, SSK, P 1, K2tog; rep from \* for rnd.  
 Rnd 32: \* SSK, K2tog; rep from \* for rnd.

**Finishing:** Remove marker. Cut yarn leaving a 10" tail and with darning needle draw yarn through rem sts, pull snug and weave in ends.



*We are committed to excellence in our products and strive to make these instructions as accurate and complete as possible. However, we cannot be responsible for the variance of individual knitters and crocheters, human error, or typographical mistakes. If you have any questions, please e-mail us at [info@kraemeryarns.com](mailto:info@kraemeryarns.com)*

## COMMONLY USED KNITTING ABBREVIATIONS

<b>beg</b>	begin	<b>LH</b>	left hand	<b>sl</b>	slip
<b>BO</b>	bind off	<b>M1</b>	make one (increase 1 stitch)	<b>ssk</b>	slip 1, slip 1, knit 2 slipped stitches together
<b>CC</b>	contrasting color	<b>MC</b>	main color	<b>st st</b>	stockinette (stocking) stitch (1 row K, 1 row P)
<b>CN</b>	cable needle	<b>P</b>	purl	<b>st(s)</b>	stitch(es)
<b>CO</b>	cast on, cast off	<b>p2sso</b>	pass 2 slipped stitches over	<b>tbl</b>	through back of loop
<b>cont</b>	continue	<b>P2tog</b>	purl 2 stitches together (1 stitch decreased)	<b>tog</b>	together
<b>dec(s)</b>	decrease(s)/decreasing	<b>patt rep(s)</b>	pattern repeat(s)	<b>WS</b>	wrong side
<b>dpn</b>	double-pointed needles	<b>patt(s)</b>	pattern(s)	<b>wyib</b>	with yarn in back
<b>eor</b>	every other row	<b>PM</b>	place marker	<b>wyif</b>	with yarn in front
<b>g st</b>	garter stitch (K every row)	<b>pssso</b>	pass slipped stitch over	<b>yo</b>	yarn over
<b>inc(s)</b>	increase(s)/increasing	<b>pwise</b>	purlwise	<b>yon</b>	yarn over needle
<b>K</b>	knit	<b>rem</b>	remain(ing)	<b>( )</b>	repeat instructions in parantheses number of times indicated
<b>K1, s1, pssso</b>	knit one, slip one, pass slipped stitch over	<b>rep</b>	repeat	<b>*</b>	repeat instructions following asterisk as indicated or until end of row
<b>K2tog</b>	knit 2 together	<b>RH</b>	right hand	<b>[ ]</b>	instructions in square brackets refer to larger sizes
<b>K2tog tbl</b>	knit 2 together through back loop	<b>rnd(s)</b>	round(s)		
<b>knwise</b>	knitwise	<b>RS</b>	right side		